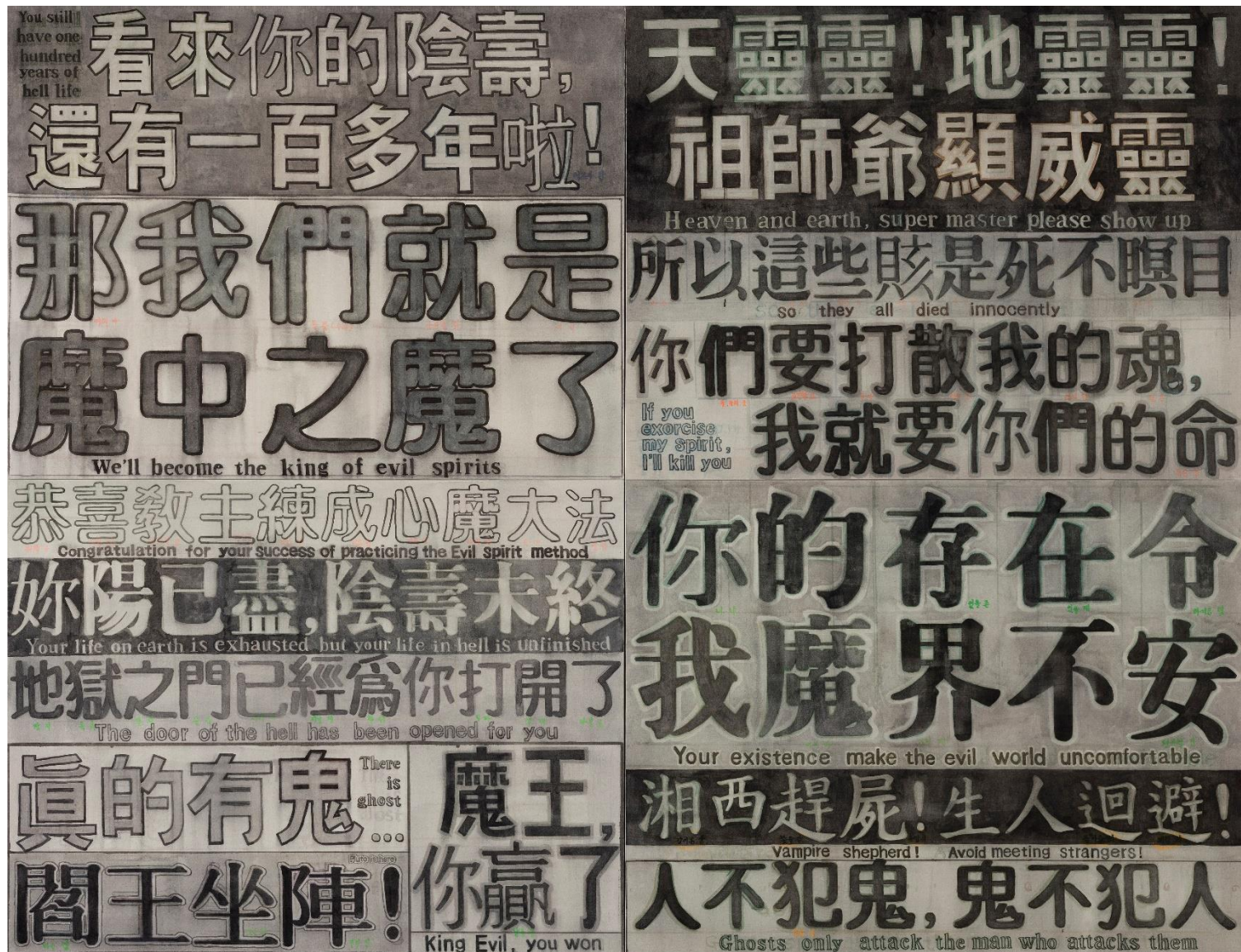
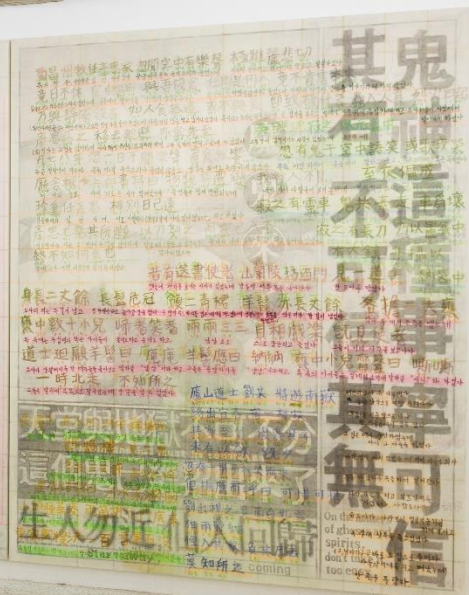
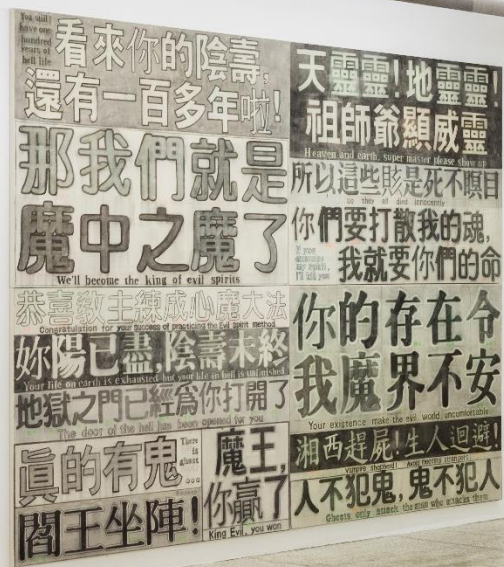


최수련

CHOE, Sooryeon



Voice of (evil) Spirit, 2020, Watercolor, acrylic on cotton cloth, 224x290cm (4pcs)



<霧中筆寫>, 2020, Sansumunhwa, Installation View

彭虎子 少壯有膂力 常謂無鬼神 母死
俗巫誡之云 某日殃然當運 重有所殺
宜出避之 合家細弱 悉出逃隱
虎子獨留不去 夜中 有人排門入
至東西屋 覓人不得 次入屋 向廬室中
虎子遽避無計 牀頭先有一甕 便入其中
以板蓋頭 覺母在板上
有人問板下無人耶 母云 無 相率而去

周司禮卿張希望 移舊居改造 見
鬼人馮毅見之曰 當新廡下 有一
伏尸 極怒 公可避之 望笑曰 吾
少長已來 未曾信如事 公勿言
後月餘 毅入 見鬼持弓矢 隨希
望後 適及階 鬼引弓射中肩膀 希
望覺背痛 以手撫之 其日卒

開元時 有崔尚者 著無鬼論 詞甚有
理 既成 將進之 忽有道士詣門 求
見其論 讀竟 謂尚曰 詞理甚工 然
天地之間 若云無鬼 此謬矣 尚謂何
以言之 道士曰 我則鬼也 豈可謂無
君若進本 當為諸鬼神所殺 不如焚
之 因爾不見 竟失其本

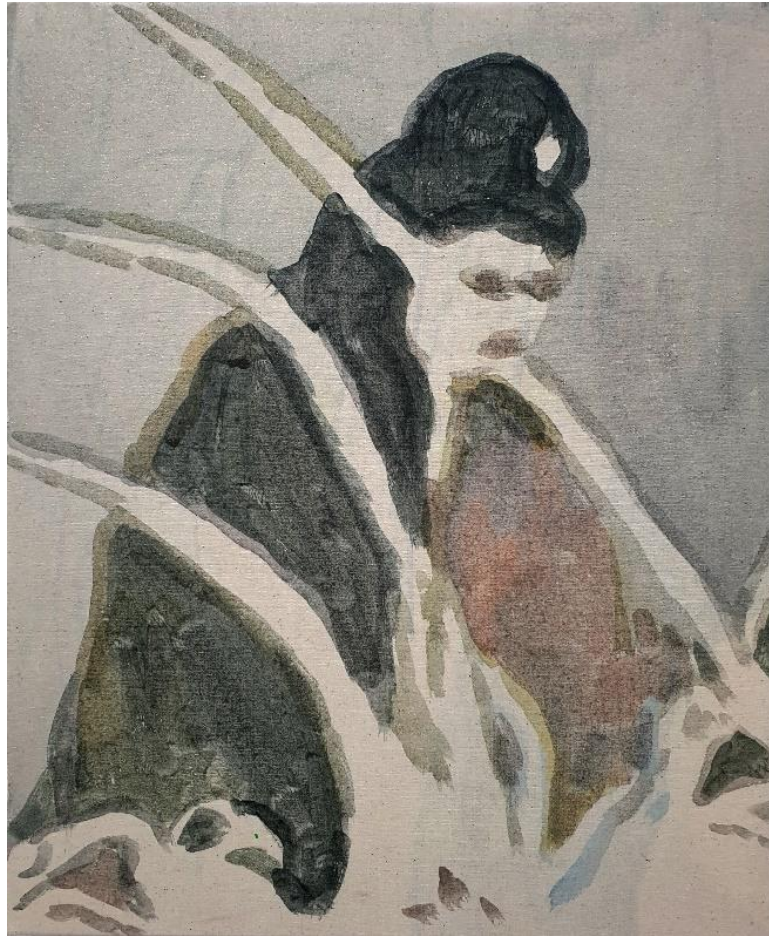
吳興施續 有門生 常秉無鬼論 忽有一單衣
白袖者 與共語 覺其神容 鄙陋 乃
曰 君辭巧理不足 僕即是鬼 何以云無 問鬼
何以來 答曰 僕使來取君 期盡 明日食時
門生請乞飯 鬼問 有人似汝者在 云 施續
帳下 爾嘗 與僕相似 僕與僕住 與都督對坐
鬼手中出一鐵 可尺餘 安著都督頸 使舉鞭
打之 都督共 蹶覺殺痛 向來轉側 食頃使亡

阮瞻素秉無鬼論 有一鬼還姓名 作
雲 瞻之 意通 聊談名理 客甚有才
情 未及鬼神事 及罷 其言 客遂
之 仍作問 瞻答 瞻所共傳
君何語言無 即變異形 須臾使滅
阮瞻然 喜色太盛 年餘病死

People who don't believe in ghost
2020
Watercolor on Paper
30x40cm each
(5pcs)



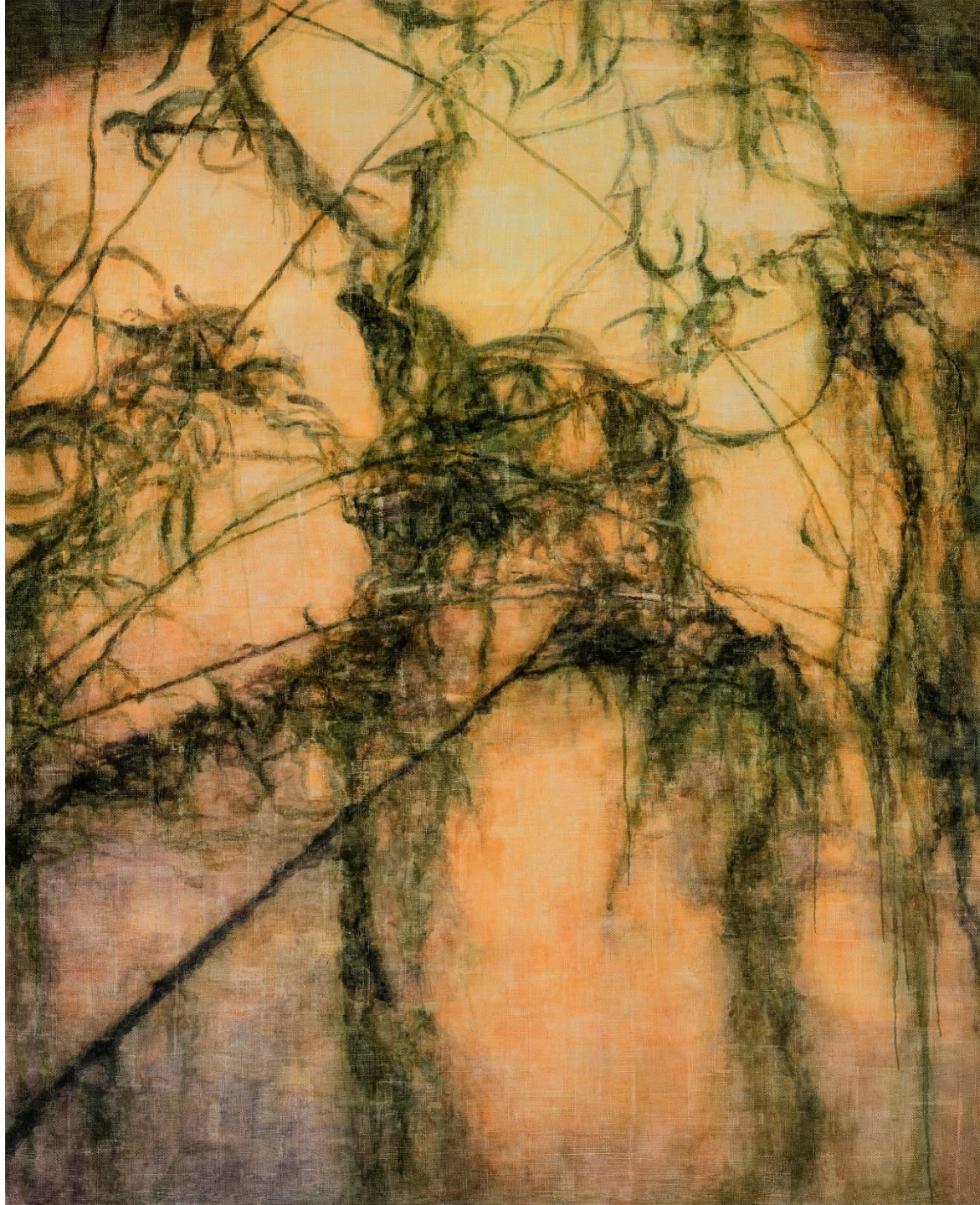
啾啾, 2020, Oil on Linen, 227x182cm



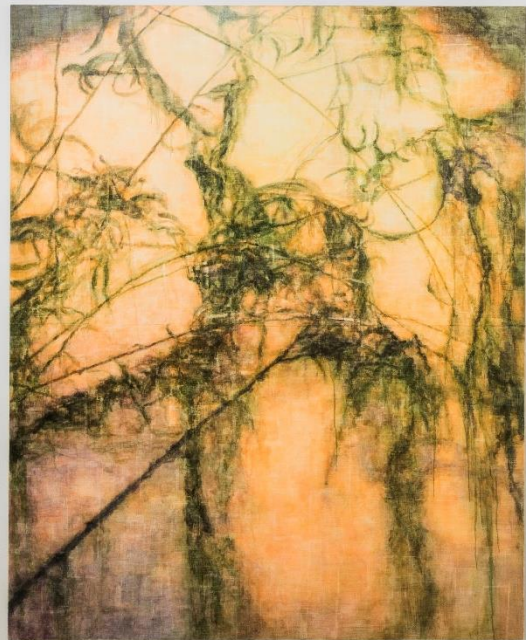
Woman in great peace, 2020, Watercolor, acrylic on cotton cloth, 45.5x37.5cm



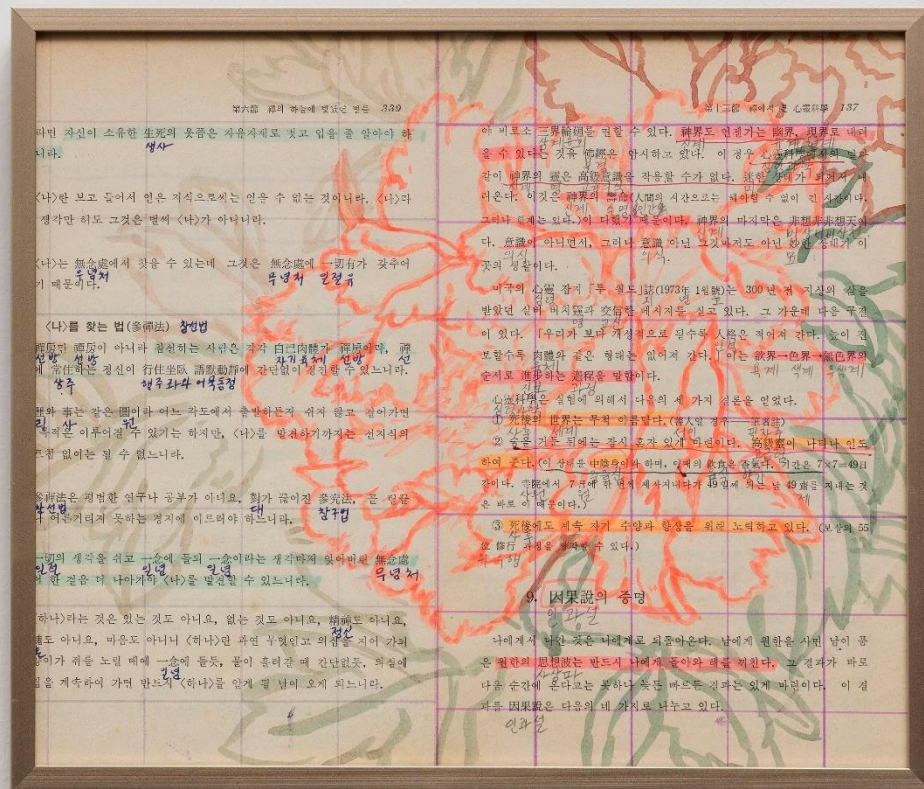
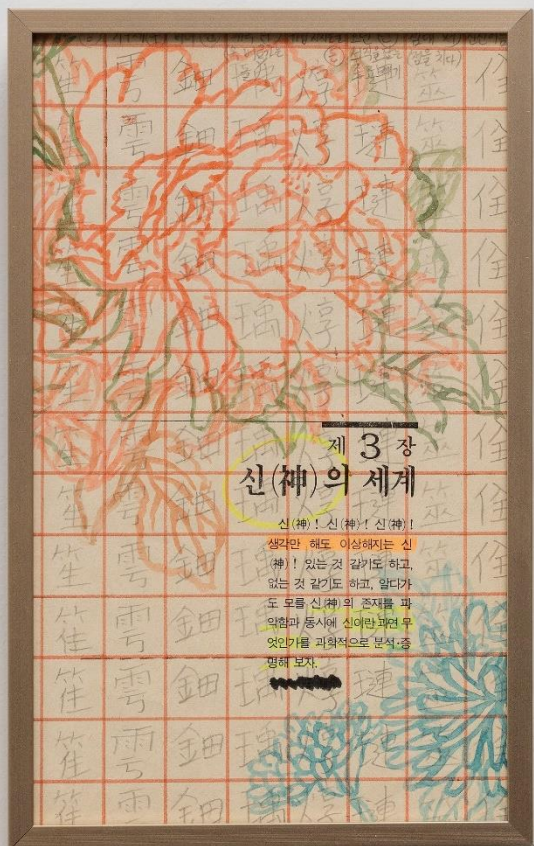
Women in great peace
2020
Oil on Linen
145x112cm



Where Everything is in order
2020
Oil on Linen
210x170cm



<霧中筆寫>, 2020, Sansumunhwa, Installation View



只不知(World of ghost), 2020, Watercolor,ink,pencil on book paper, 23x14.3cm
只不知(Retributive justice), 2020, Watercolor,ink on book paper, 21.5x25.2cm



Women in great peace, 2020, Watercolor, acrylic on cotton cloth, 35x27cm





Pictures for Use and Pleasure, 2020, Watercolor on cotton cloth, printed paper, 220x1300cm (Installation View)

應手有聲

(물은) 응수하며 소리를 지르더니

縮入地

오그라져 땅속으로 들어갔다.

因而寢疾

인하여 (유량은) 병져 누웠고

遂亡

드디어는 죽었다.

余舉一足

한 발을 들더니

須臾不見

잠깐만에 보이지 않았다.

少時劉死

조금 지나서 유씨는 죽었다.

一人曰 我亦受命來取 一人又曰 我受命

(다른) 한 사람도 말하기를

“나 또한 명령을 받고 (그대를) 데리러 왔습니다.” 한

사람이 또 말하기를 “나는 전에 명령을 받

Chinese ghost story for Hangeul Generation, 2020, Watercolor, acrylic on wall(detail)

怪之數日 廣陵大疫 此脾亦病 遂率 既而

하게 여겼다.

몇날 뒤

광릉에

큰 전염병이 돌았는데

이

계집종도

또한

병에 걸리더니

죽었다.

이윽고

손은 매우 재주가 많았는데

反覆甚苦 客

돌이킬 반 뒤집힌 복 심할 심 쓸 고 (손을) 손 객

반복하여 (귀신은 없다는 주장을 하며) 심하게 괴롭혔다.

鬼神古今聖賢

귀신 귀 귀신 옛 고 이제 금 성인 성 여질 연

"귀신에 대해서는 고금성현들께서 모두 존재한다고

卽變爲異形

곧 즉 변할 변 할 위 다를 이 모양 형

(손은) 곧 자기의 몸을 변화시켜 기이한 형체를 만들

阮嘿然

성씨 완 고요할 죽 고될 연 뜻 의

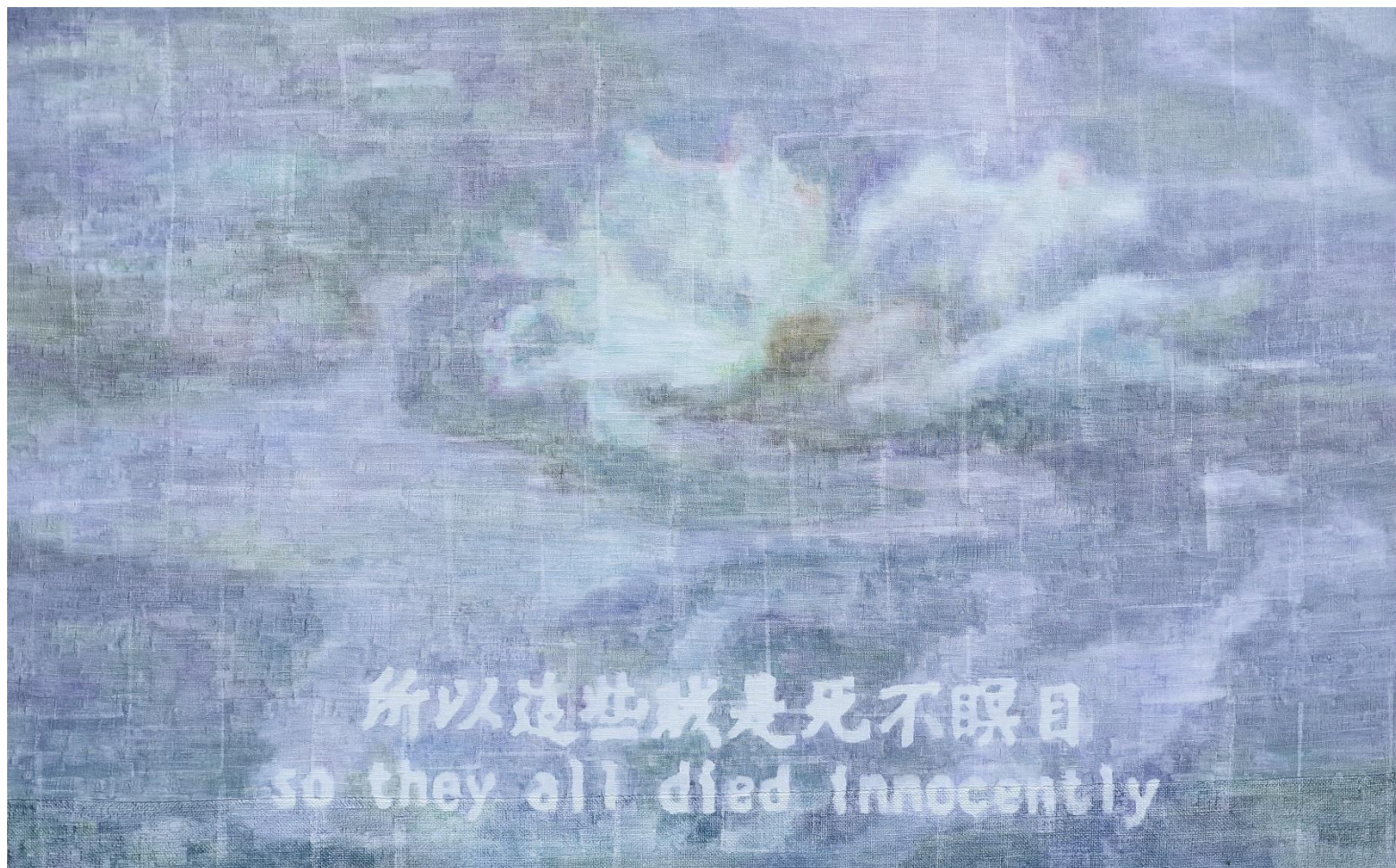
완침은 머히지 아무마 무히지

阮瞻素秉無鬼論 有一鬼通姓名 作客詣之 寒溫 聊談名理 客甚有才情 未及鬼神事 反覆甚苦 客遂屈之 仍作色曰 鬼神古今聖賢所共傳 君何獨言無 卽變爲異形 須臾便滅 阮嘿然 意色大惡 年餘病死

완침은 평소 '귀신은 없다'는 이론을 주장하였다. 어떤 한 귀신이 완침에게 자기의 성명을 통보하고 손이 되어 그에게 나아갔다. 서로 날씨의 춥고 더움을 묻고 인사를 한 뒤, 애오라지 사물의 이름과 이치에 대하여 이야기를 나누었다. 손은 매우 재주가 많았는데 이야기 끝에 귀신의 일을 언급하게 되자, 완침이 반복하여 귀신은 없다는 주장을 하며 심하게 손을 괴롭혔다. 손은 드디어 완침에게 굴복하였는데 인하여 정색을 하고 말하기를 "귀신에 대하여는 고금의 성현들께서 모두 존재한다고 말씀을 전하셨는데 그대는 어찌 혼자서 귀신이 없다고 말합니까?"라고 하였다. 손은 곧 자기의 몸을 변화시켜 기이한 형태로 만들더니, 잠깐 뒤에 바로 그 자리에서 없어져 버렸다. 완침은 멍하게 아무 말을 못하였고, 마음과 안색이 크게 나빠졌다. 일년쯤 지나서 완침은 병들어 죽었다.



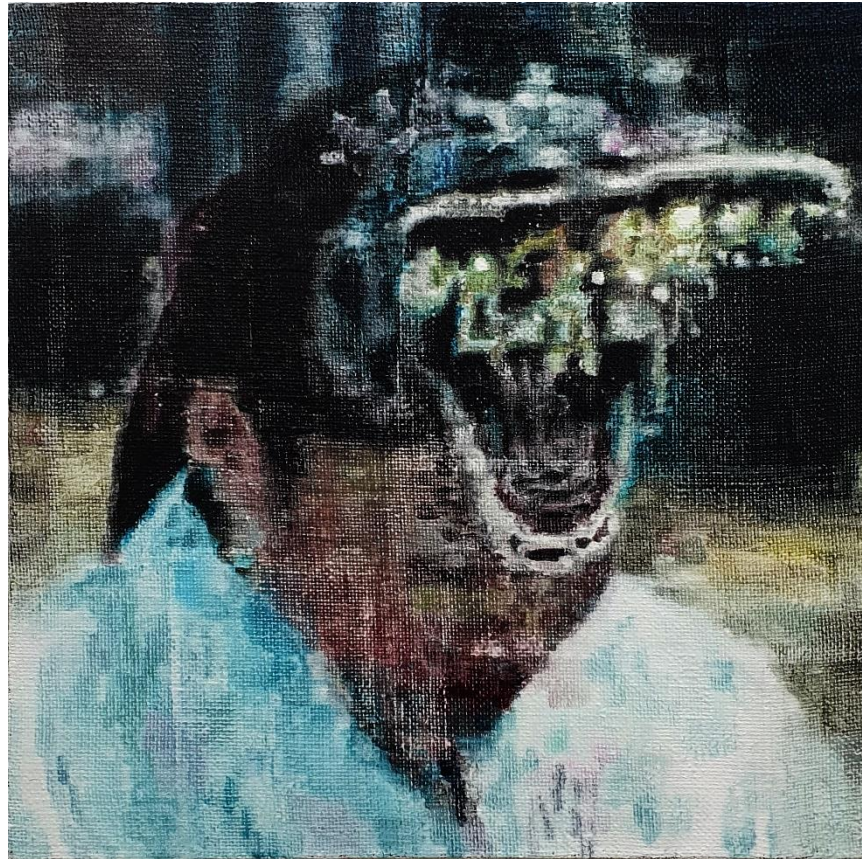
莊嚴練習, 2019, watercolor on paper, 48.5x49cm each (100pcs) Installation View



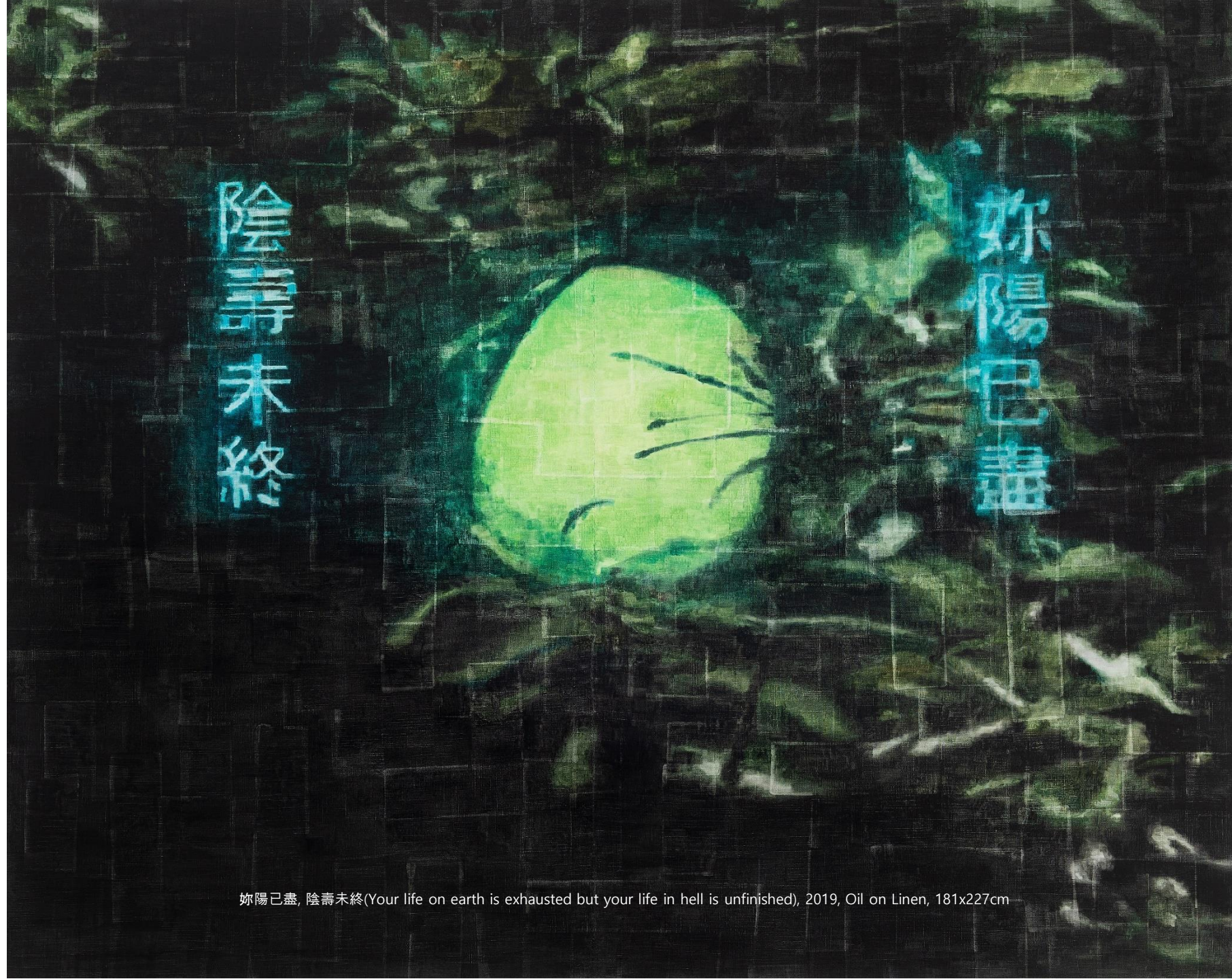
so they all died innocently, 2019, Oil on Linen and Jute, 90x145cm



Women in great peace, 2019, Watercolor, acrylic, ink, paper tape on cotton cloth, 56x52cm



仙女 Seonnyeo, 2019, Oil on Jute, 45x45cm



妳陽已盡, 陰壽未終(Your life on earth is exhausted but your life in hell is unfinished), 2019, Oil on Linen, 181x227cm



妳陽已盡，陰壽未終(Your life on earth is exhausted but your life in hell is unfinished)_Japanese apricot flower, 2019, Oil on Jute, 97x130cm
 妳陽已盡，陰壽未終(Your life on earth is exhausted but your life in hell is unfinished)_willow branches, 2019, Oil on Jute, 97x130cm
 妳陽已盡，陰壽未終(Your life on earth is exhausted but your life in hell is unfinished)_bamboo, 2019, Oil on Jute, 97x130cm



魔王, 你赢了
(King Evil, you won)
2019
Oil on Linen
230x160cm



答_剿_賊_荆, 2018, Masking Fluid on Wood



Cloud Ghost, 2018, Oil on Jute, 145x89cm
To be a half-god, 2018, Masking Fluid on Wall



Four Hearts Get Together, 2018, Oil on Linen, 89x130cm



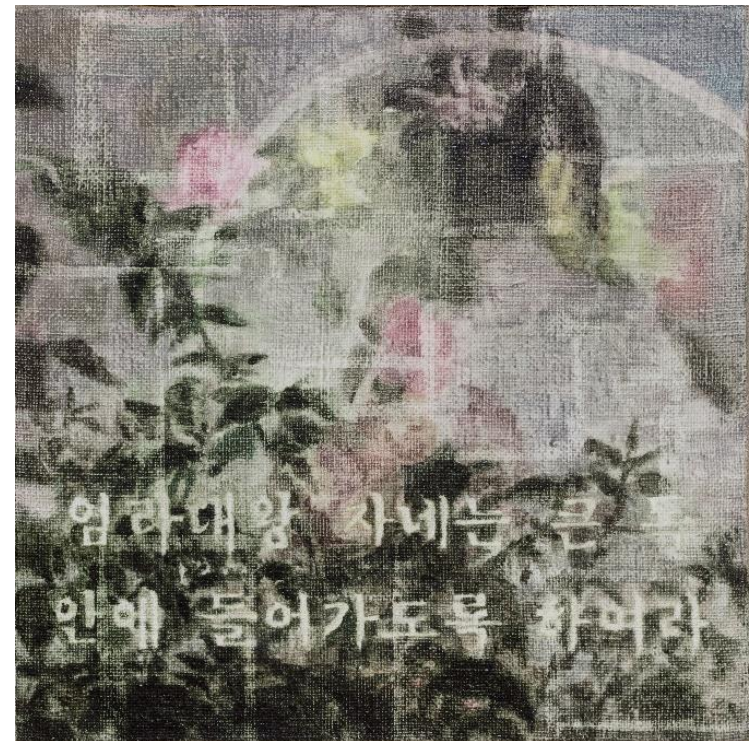
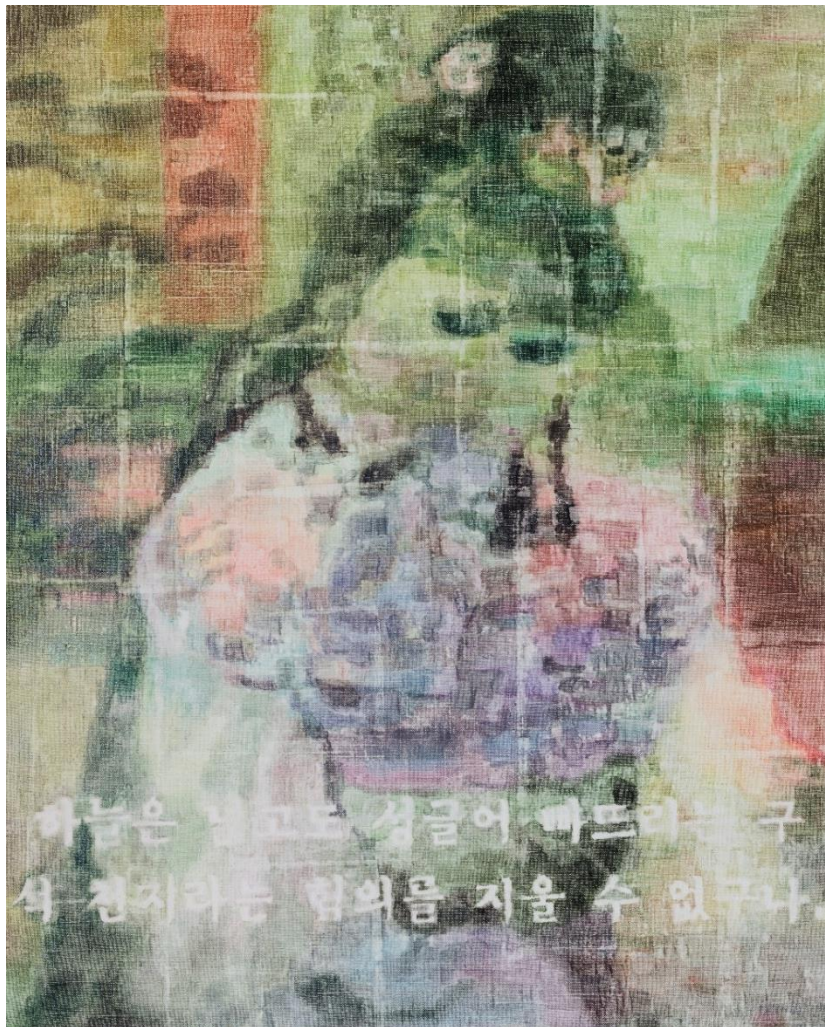
Pluto is here, 2018, Oil on Linen, 112x145cm
Devil is here, 2018, Oil on Linen, 112x145cm



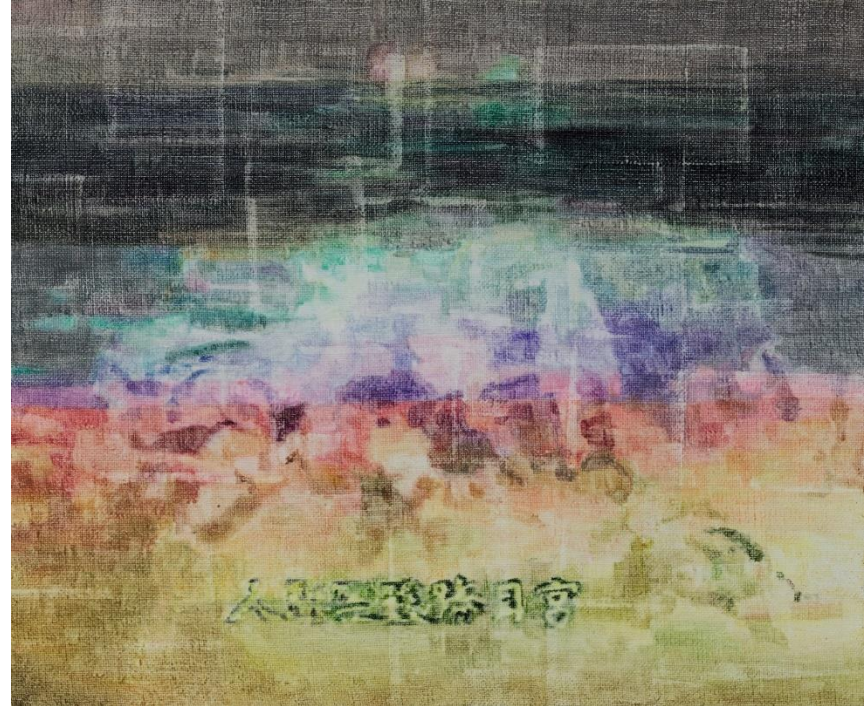
泰平(Under the bridge), 2018, Oil on Linen, 27x35cm
不吉, 2018, Oil on Linen, 27x35cm



泰平(Rose)
2018
Oil on Linen
38x45.5cm



The world is not fair in any way, 2018, Oil on Linen, 80x65cm
You, the King of Underworld..., 2018, Oil on Jute, 45x45cm



He's bewitching, 2018, Oil on Linen, 41x32cm
 Moon Palace, 2018, Oil on Jute, 60.5x72.5cm



仙女 Seonnyeo, 2018, Oil on Linen, 160x230cm
 仙女 Seonnyeo, 2018, Oil on Linen, 163x130cm



仙女 Seonnyeo, 2019, Oil on Linen and Jute, 163x112cm



仙女 Seonnyeo, 2017, Oil on Linen, 130x163cm



仙女 Seonnyeo
2018
Oil on Linen
116x91cm



仙女 Seonnyeo
2017
Oil on Linen
194x130cm



仙女 Seonnyeo, 2017, Oil on Linen, 145x97cm each(2pcs)



仙女 Seonnyeo, 2017, Oil on Linen, 194x130cm



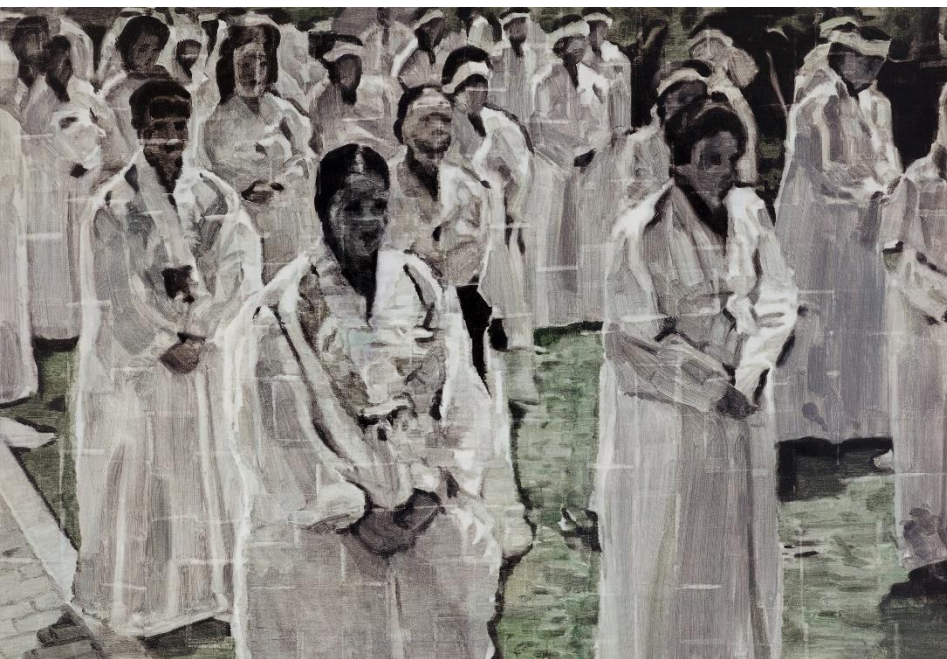
仙女 Seonnyeo
2018
Oil on Linen
163x130cm



仙女 Seonnyeo
2017
Oil on Linen
227x181cm



仙女 Seonnyeo
2017
Oil on Linen
230x160cm



Ceremony, 2016, Oil on Linen, 112x163cm each (2pcs)



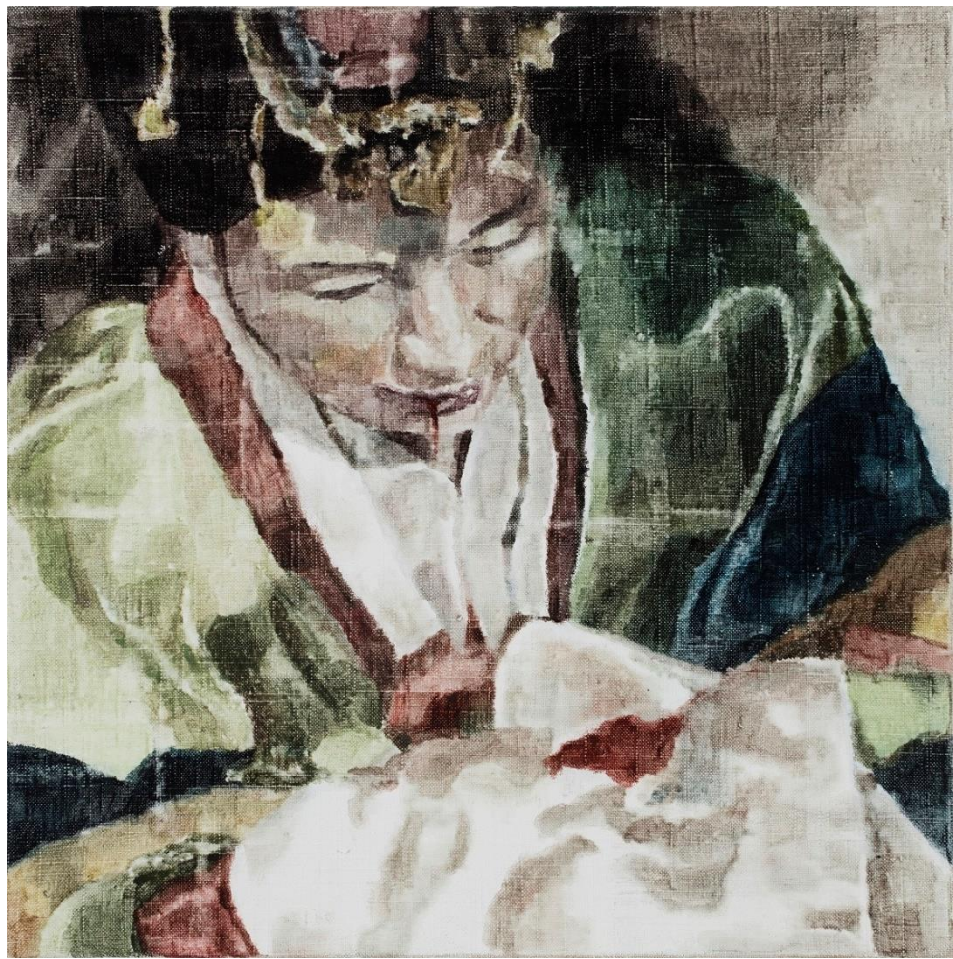
仙女 Seonnyeo, 2017, Oil on Jute, 38x38cm(2pcs)



顏 Hunting Vampire
2016
Oil on Linen
129x137cm each
(4pcs)



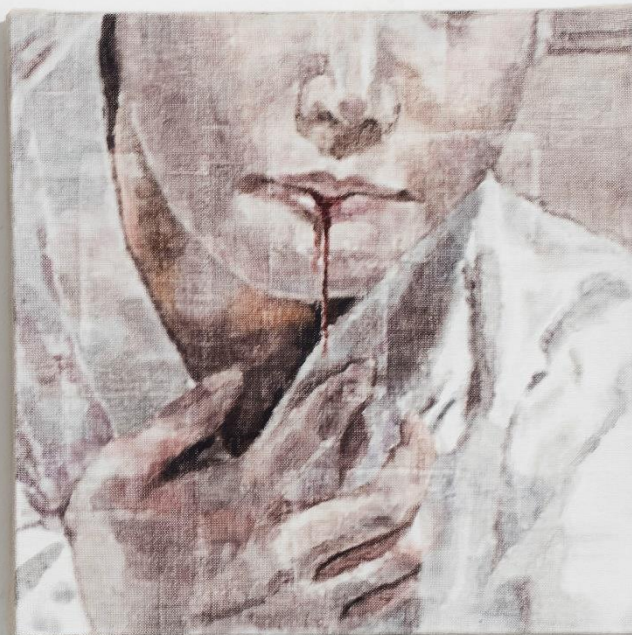
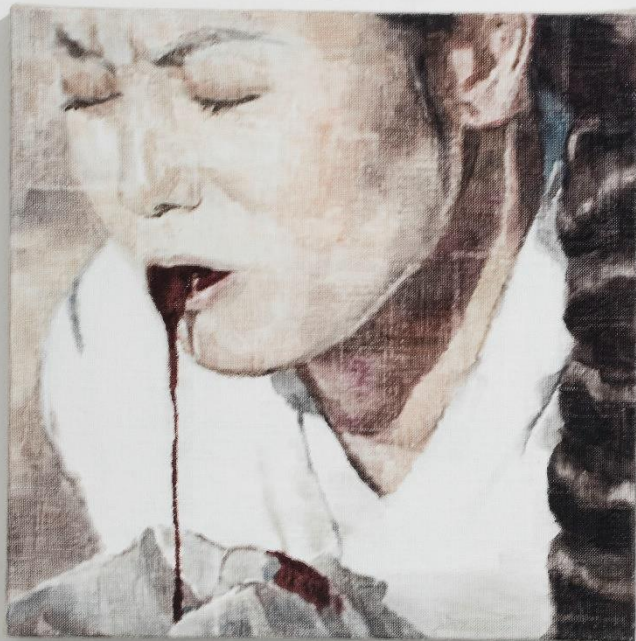
憲治 Over the Evil, 2016, Oil on Linen, 92x91cm each(3pcs)



懲治 Over the Evil, 2016, Oil on Linen, 45x45cm



愍治 Over the Evil, 2016, Oil on Linen, 58x58cm each(2pcs)



憲治 Over the Evil, 2016, Oil on Linen, 38x38cm each(2pcs)



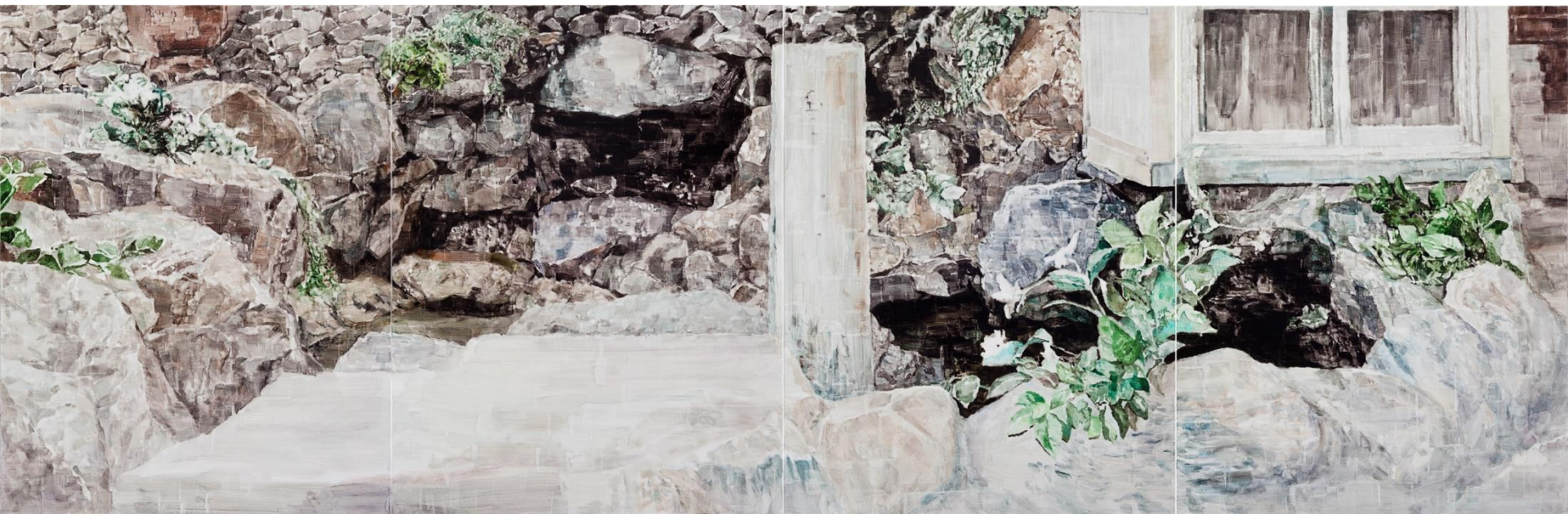
Thousand years old Fox, 2016, Oil on Linen, 33x24cm each(4pcs)



The Husband also died, 2016, Oil on Linen, 45x38cm



Underwater Palace
2018
Oil on Linen
129x137cm



Underwater Palace, 2015, Oil on Linen, 145x448cm



Underwater Palace
2014
Oil on Linen
194x260cm



Underwater palace, 2014, Oil on Linen ,100x80cm,130x89cm (2pcs) Installation view



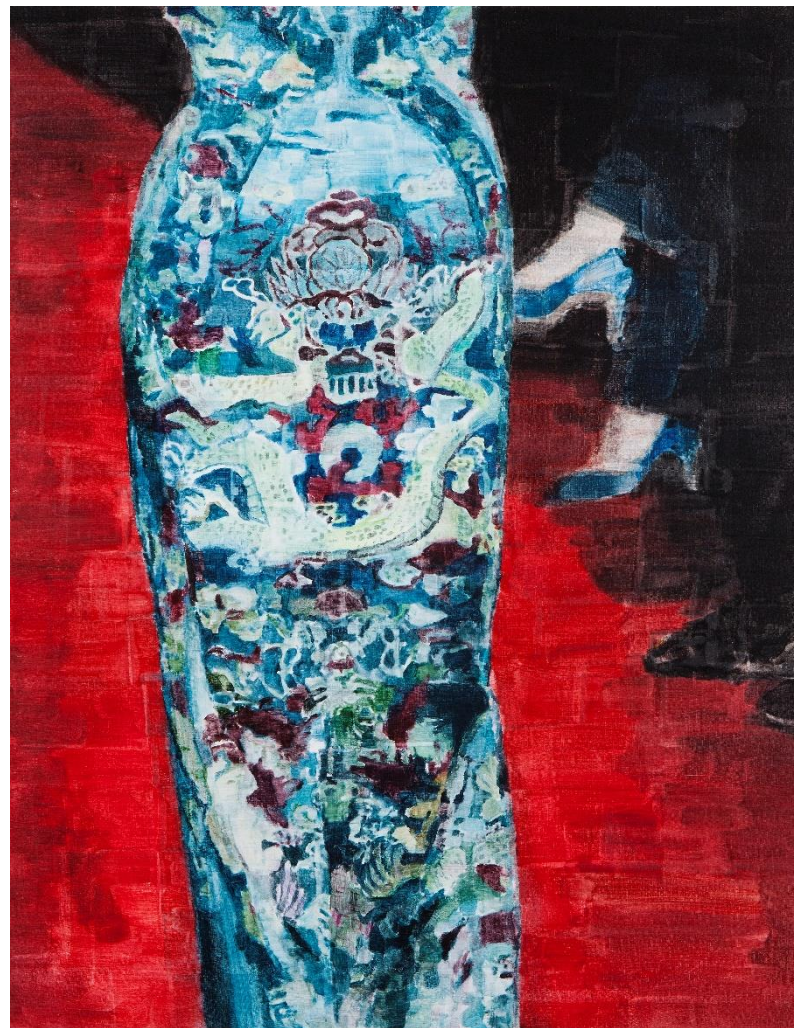
Underwater Palace, 2015, Oil on Linen, 194x390cm (Installation view)



Great believer, 2014, Oil on Linen, 145x560cm(5pcs)
Installation view



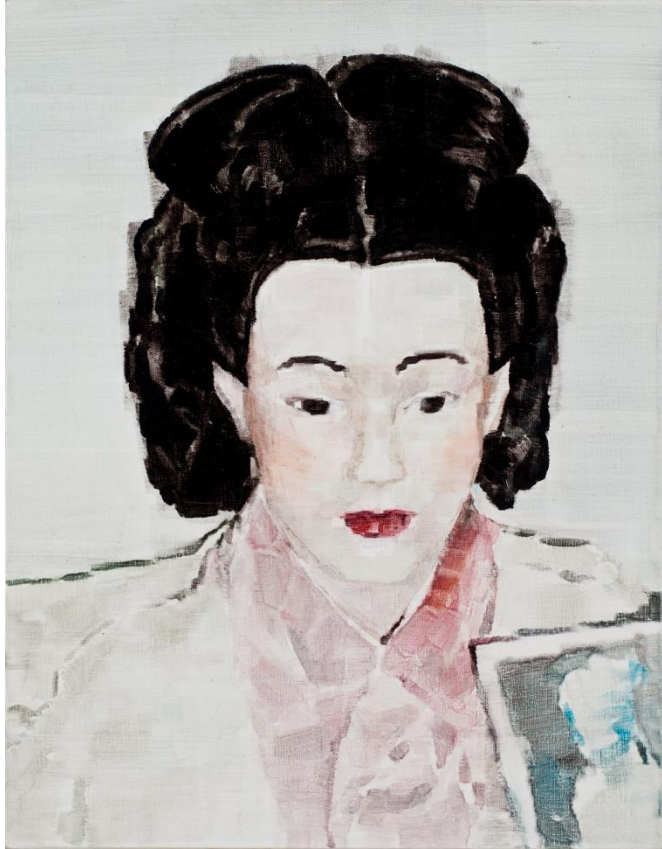
Great believer, 2014, Oil on Linen, 145x224cm



Oriental mood, 2015, Oil on Linen, 116x91cm each(2pcs)



Oriental mood, 2015, Oil on Linen, 59x175cm(4pcs)



仙女 Seonnyeo, 2015, Oil on Linen, 53x40cm each(2pcs)



Jade Emperor, 2013, Oil on Linen, 162x112cm



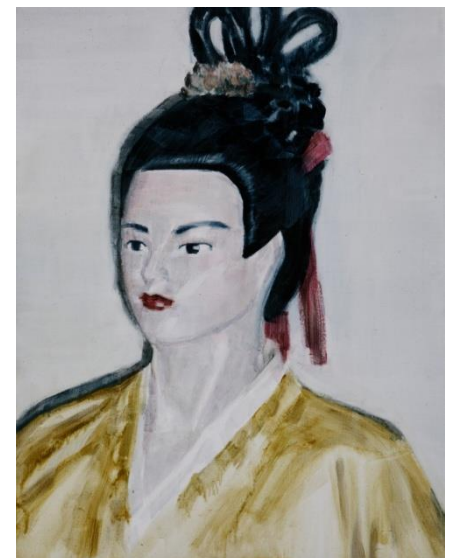
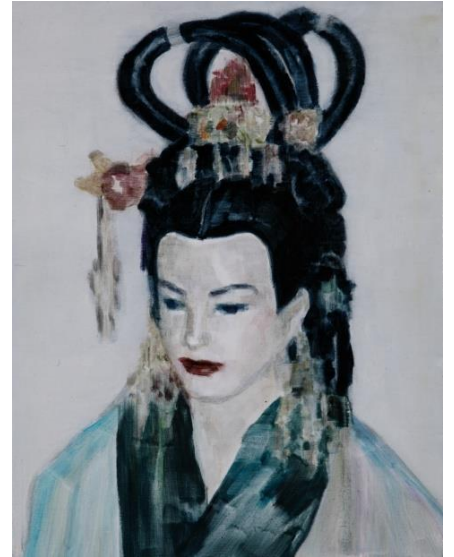
Dragon King, 2013, Oil on Linen, 145x97cm



Dragon King, 2013, Oil on Linen, 100x80cm



Jade Emperor_female, 2013, Oil on Linen, 100x72cm



8 仙女 (8Seonnyeo), 2013, Oil on Linen, 53x40cm each(8pcs)

Conventional concepts recreated in the present day such as tradition, oriental, national identity etc. are both familiar, easily bringing to mind conventional images, and suspect at the same time. The way these concepts, which are not clearly substantiated, are recreated, contains the accumulation of the ways in which society has looked at history and change. They are materialized in images that contain both archaic refinement as well as simplistic and shoddy finish. The piece looks at how traditional images are reproduced and consumed in Korean society, through mannequins in an exhibition of traditional culture, rituals of a new religious movement, scenes from a shamanistic ritual hall or depictions of punishments in historical dramas. These examples are recreated on the canvas in a specific way. Both superficial yet antiquated and grand, the duality of these reproductions is confronted, but not subjected to aesthetic or social judgment. The goal is to go beyond simple criticism, to understand the inevitability and limitations contained within. It is also the act of coolly observing the feeble continuation or discoloration of once shining and powerful concepts to the very end. (CHOE, sooryeon)